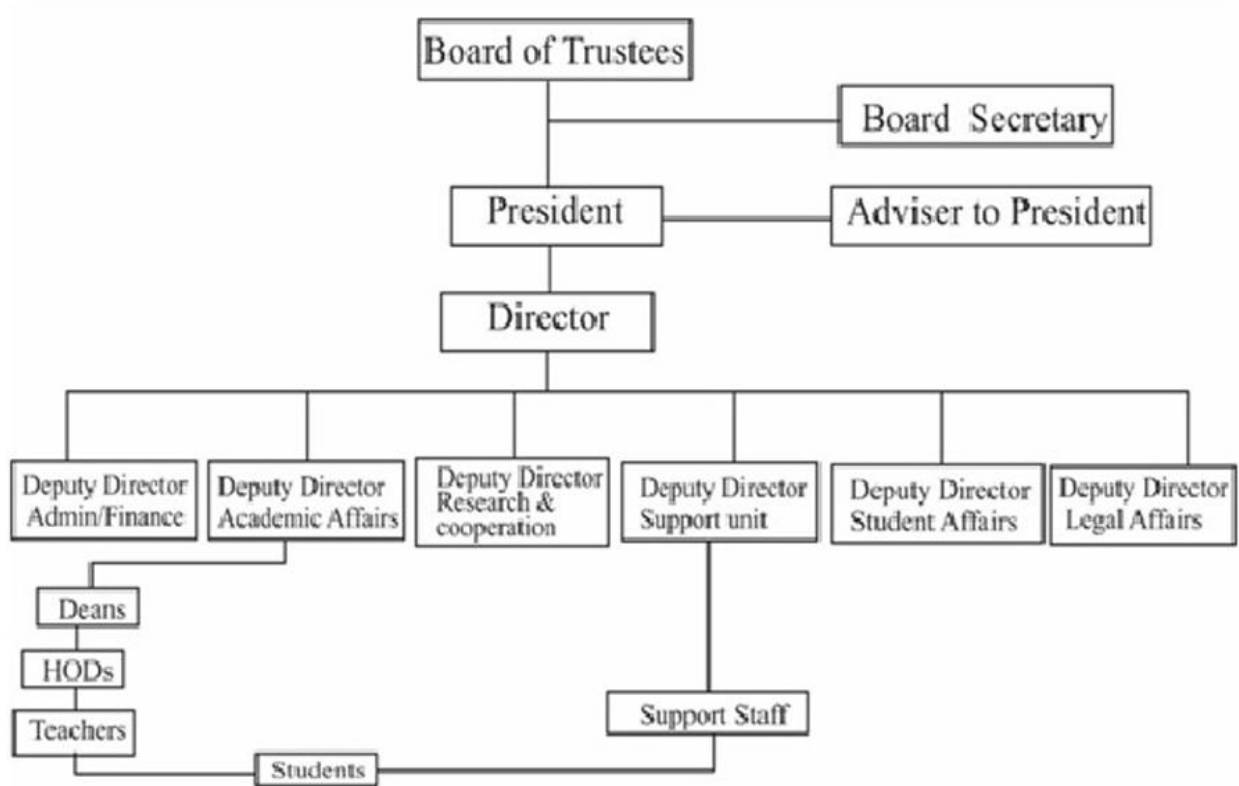


## A) THE ORGANIZATIONAL CHART OF LUTHER KING UNIVERSITY INSTITUTE (MALUKU)



## B. LIST OF LABORATORY EQUIPMENT

### I) Demonstration laboratory for nursing and midwifery contains the following equipment.

- A demonstration doll representing a human torso
- A baby model
- A centrifuge
- A small delivery bed
- A human skeleton
- A few parts of the female body (uterus, bony pelvis, pelvic muscles, etc)
- Blood pressure machine
- Weighing machine
- Drip stand
- Birthing station simulator

- A stethoscope

## **II) The Computer Laboratory**

- Fifteen desktop computers
- A printer
- A scanner
- Network cables

## **III) The Electricity/Electronics Laboratory.**

- Soldering iron,
- Soldering pump,
- Digital multimeter,
- Analog multimeter,
- Clamp meter,
- Frequency generator,
- Circuit finders,
- Circuit analysers,
- Karabiners and hooks,
- Heavy duty cable-cutters,
- Set of screw-drivers, and variable power supply (1.5V to 3.5V).

## **V) The Network Laboratory.**

- Hotspots,
- Ethernet hub,
- Category 5/6 cables,
- RJ 11/45 cable tester,
- Crimping tools,
- Firewalls,
- Access Points,
- Bridges and Gateway

## **VI) Engineering Laboratory.**

- Blue Mythelene test apparatus,
- Friction Pendulum,
- Shock table,
- Water bath,
- Marshall moulds,

- Marshall Hammer,
- V-Cat apparatus,
- Flash pipe apparatus, and
- Direct Shear Machine

## **VII). Library**

- About 2000 physical books
- About 20000 virtual books

## **VIII) Lecture Rooms**

- 08 lecture rooms, fairly aerated, with sitting capacities varying from 100 to 40
- Well lit rooms, but few switches, bulbs, sockets and white boards.

**XV)** The School also has some instruments for agricultural engineering including: Sprayers, Wheelbarrows, Rain boots, Hand gloves, Cutlasses, Hoes, Watering cans, Rakes, Helmets, Spades and Shovels as well as Farm suits. It has four labelled modern toilets (two for males and two for females).